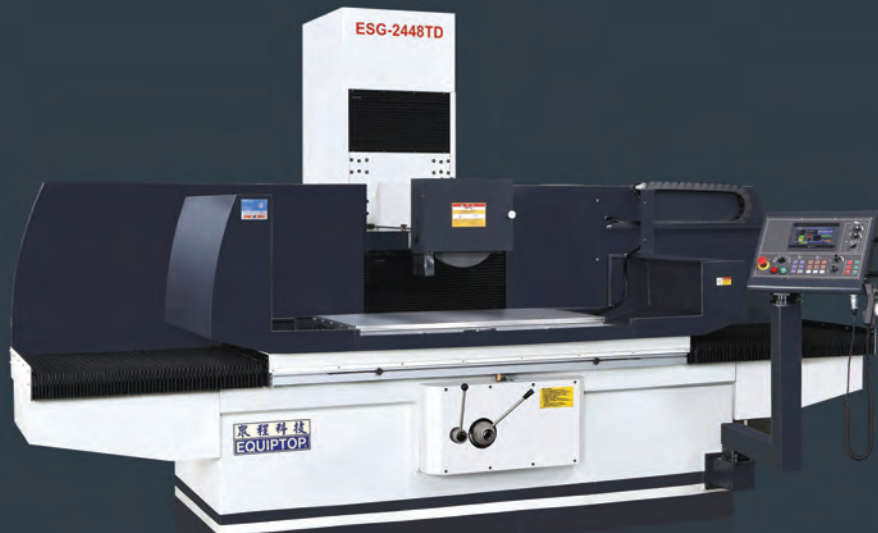




FAIR FRIEND ENT. GROUP

EQUIPTOP HIGH PRECISION SURFACE GRINDERS

Innovation · Perfection · Technology · Value



www.equiptop.com.tw



EQUIPTOP GRINDER



UF / ESG-618 MANUAL TYPE.

UF / ESG-618M / 818M MANUAL TYPE(BALLWAY)

1 A : LONGITUDINAL HYDRAULIC.

2 A : LONGITUDINAL HYDRAULIC AND CROSSFEED MOTORIZED.

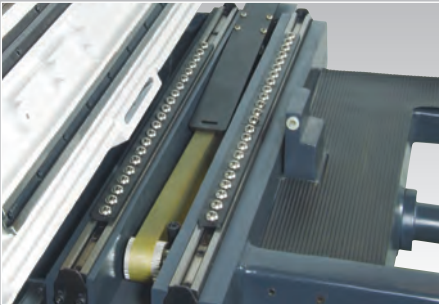
3 A : LONGITUDINAL HYDRAULIC, CROSSFEED MOTORIZED AND RAPID UP / DOWN MOTORIZED.

ASDII : FULLY AUTOMATIC IN 3 AXIS(X.Y.Z) WITH STEPPING MOTOR FOR DOWNFEED, AND AC MOTOR FOR RAPID UP / DOWN & DIGITAL POSITIONING.

TD : Equipped PLC control and MAN-MACHINE 7.2" touch color screen.

EQUIPTOP HIGH PRECISION SURFACE GRINDERS

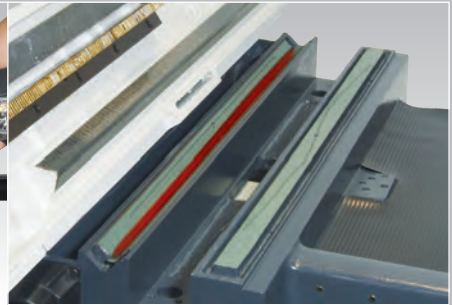
Innovation · Perfection · Technology · Value



Patented steel wire timing belt transmission system (for 618M / 818M only) High precision slides way & steel balls assemble that allow lasting accuracy and smooth movement.



Indexible table handwheel



Hand scrapped one "V" one " - " Turcite-B slide ways for table longitudinal movement.

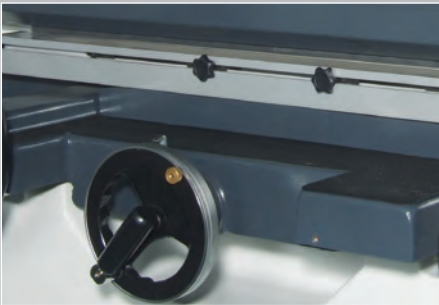


Table travel adjustment, provide built-in-type (hidden) proximity switch, features safe and easy operation (for 1A above).



2A. 3A. models cross traverse system



The saddle rests on precision hand-scraped double V ways, and the table rests on precision hand-scraped V and flat ways which coated with "TURCITE-B". These guide ways are equipped with auto lubrication to resist wear of guide ways, plus lasting accuracy and damping.

MANUAL SERIES



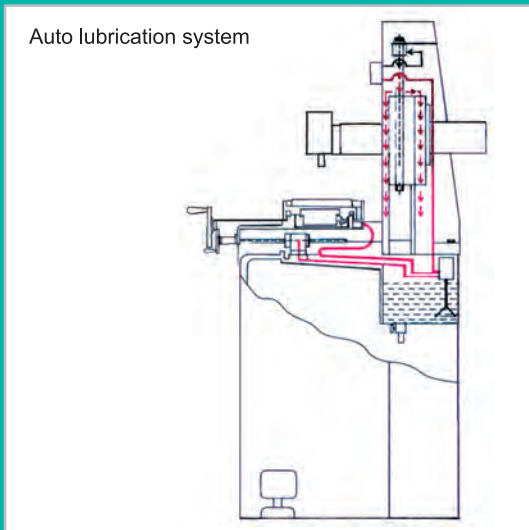
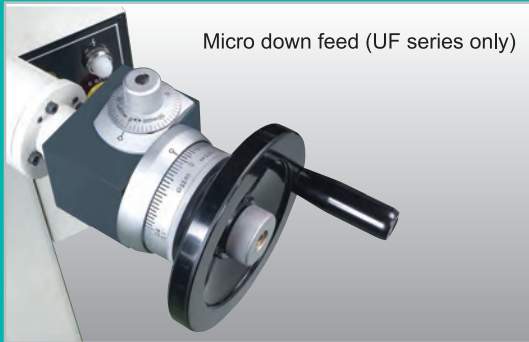
UF-614



UF-618 / UF-618M ; UF818 / UF-818M

EQUIPTOP HIGH PRECISION SURFACE GRINDERS

Innovation · Perfection · Technology · Value



ESG-614 / 618 / 618M ; ESG-818 / 818M

HYDRAULIC SERIES



ESG-1A618 / 1A818

ESG-2A618 / 2A818

ESG-1A618 : longitudinal hydraulic grinder
ESG-2A618 : longitudinal hydraulic & cross motorized grinder



ESG-3A618 / 3A818

3A:longitudinal hydraulic & cross motorized and rapid up / down.

EQUIPTOP HIGH PRECISION SURFACE GRINDERS

Innovation · Perfection · Technology · Value

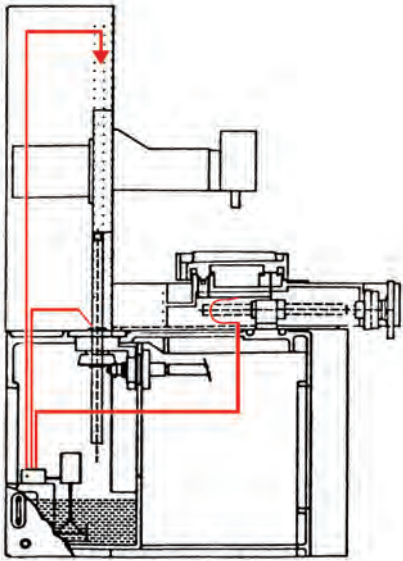


ESG-1A1020 / ESG-2A1020 / ESG-3A1020



ESG-2A1224 / ESG-3A1224

HYDRAULIC SERIES



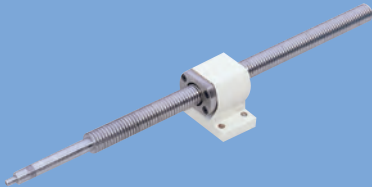
Auto lubrication system



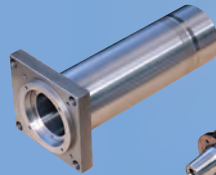
ESG-3A1228 / ESG-3A1236 / ESG-3A1632 / ESG-3A1640

EQUIPTOP HIGH PRECISION SURFACE GRINDERS

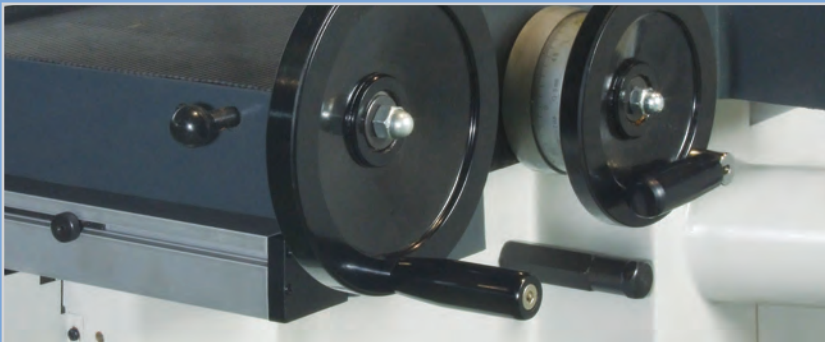
Innovation · Perfection · Technology · Value



cross feed High precision ball screw



1228-1648 models high precision spindle



Easy-adjust guarded proximity switch (long & cross)



Honeycomb-ribbed column

DIGITAL SETTING



ASD II Control Panel

- Vertical feed powered by dual motors; AC motor for rapid up / down. Stepping motor for micro downfeed positioning & slow up / down. Quick digital output feedback by encoder.
- Display the position of Y axis to show present spindle elevation position. The digital display is for setting start point, rough grinding volume, start point for finish grinding (finish grinding volume), downfeed volume for finish grinding, target point, rise up point, intermittent sparkout, and sparkout.
- Cross transverse travel powered by DC servo motor. Allows step feed & continuous infeed grinding. The speed for wheel dressing can be adjusted on the panel.

EQUIPTOP HIGH PRECISION SURFACE GRINDERS

Innovation · Perfection · Technology · Value



ESG-1020ASD II / ESG-1224ASD II / ESG-1228ASD II / ESG-1236ASD II / ESG-1632ASD II / ESG-1640ASD II

TD PLC TOUCH PANEL SETTING



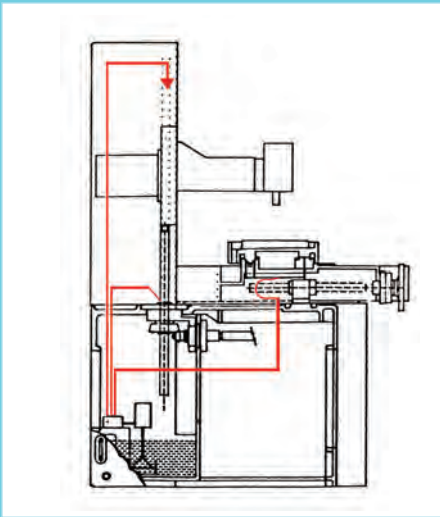
Table travel adjustment, provide built-in-type(hidden) proximity switch, features safe & easy operation.

Humanware for High Precision

- On TD models, you can set the vertical zero point, start point, finish grinding volume, target point and the grinding wheel rise-up point.
The machines features a simple & clear digital display & touch control panel for easy learning and efficient operation.
- Vertical feed powered by an efficient AC motor for rapid up / down, stepping motor for slow up / down movement and downfeed increment.
- Vertical positioning is displayed on the screen showing present spindle and setting the start point, rough grinding volume, finish grinding volume, downfeed volume for finish grinding, target point, rise up point, intermittent spark-out.
- Cross transverse travel is powered by a AC servomotor.
This allows step feeding & continuous infeed grinding.
The speed of wheel dressing can be adjusted on the panel.

EQUIPTOP HIGH PRECISION SURFACE GRINDERS

Innovation · Perfection · Technology · Value



Auto lubrication system



ESG-1224TD



Honeycomb-ribbed column



1228-2040 models table speed control



Enlarge double V base. These guide ways are equipped with auto lubrication to resist wear of guide ways, plus lasting accuracy & damping.

TD PLC TOUCH PANEL SETTING

New Generation humanware

humanware

7.2" color touch screen

Embedded MPG

Chuck Control (optional)

Z axis Cross Travel setting



An interface for humanistic Technology

COLUMN

Enlarged honeycomb ribbed column especially suitable for heavy duty grinding.

HIGH ANTI-WEAR GUIDE-WAYS

The saddle rests on precision hand scraped double V ways, and the table rests on precision hand scraped V and flat ways which coated with "TURCITE-B" These guide ways are equipped with auto lubrication to resist wear of guide ways, and provide stable movement and durable accuracy.

CROSS FEED

Cross feed ball screw is driven by AC servomotor, there are two speed rates - rough grinding speed and finish grinding speed, provide high efficiency.

OPERATION PANEL

Man-machine 7.2" touch color screen equipped PLC digital control and EQUIPTOP exclusive pictures mode working system, easy to learn and operate.

EQUIPTOP HIGH PRECISION SURFACE GRINDERS

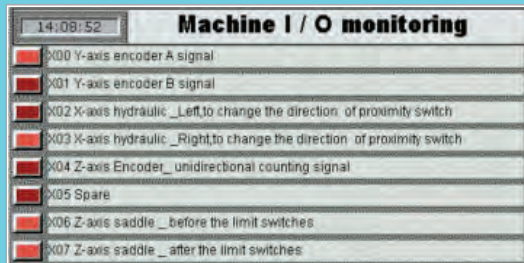
Innovation · Perfection · Technology · Value



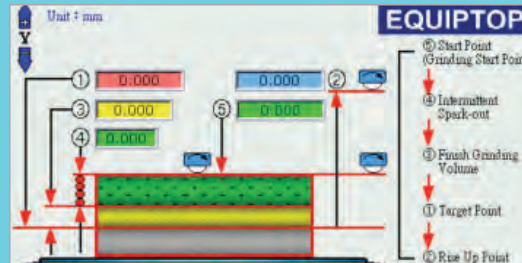
Starting Picture Page



Alarm message



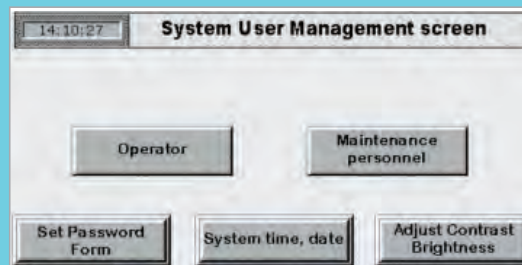
Machine I / O Monitoring



Digit setting for grinding



Downfeed (Rough grinding, Finish grinding, Sparkout setting) Minimum Display Unit:
Y axis 0.001mm / Z axis 0.001mm



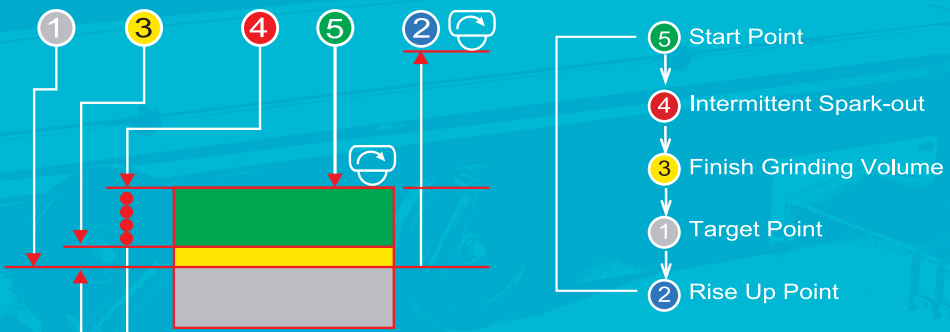
System Data

TD PLC TOUCH PANEL SETTING



EQUIPTOP HIGH PRECISION SURFACE GRINDERS

Innovation · Perfection · Technology · Value



DIGITAL SETTING

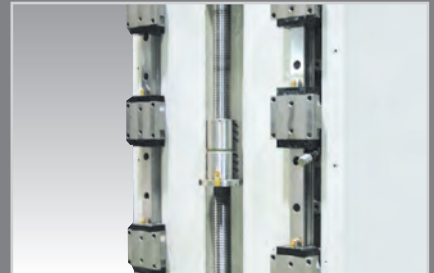


EQUIPTOP HIGH PRECISION SURFACE GRINDERS

Innovation · Perfection · Technology · Value



Manual Pulse Generator for Y axis, Z axis by
 $x1 \mu\text{m}$ / $x2 \mu\text{m}$ / $x4 \mu\text{m}$

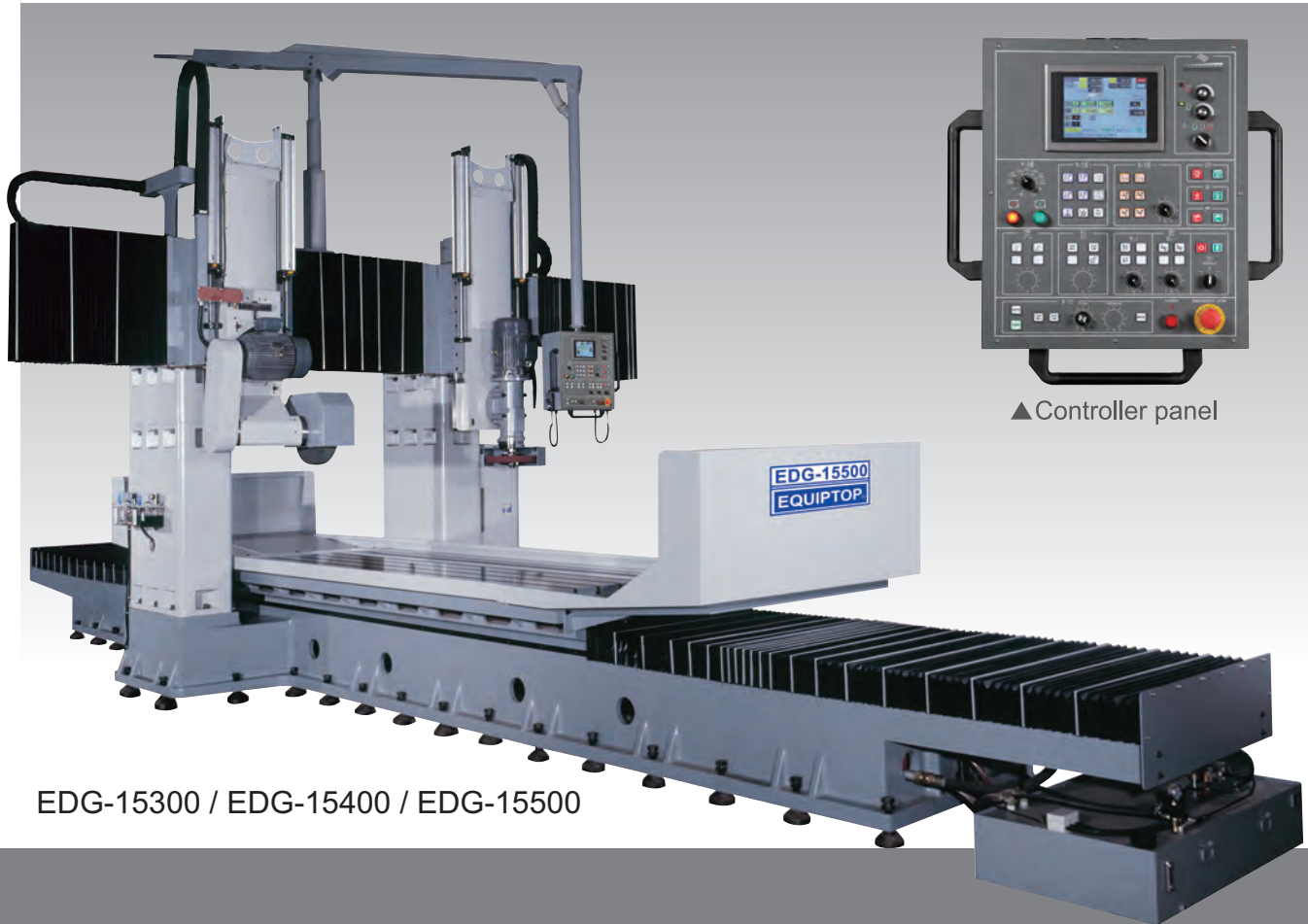


Vertical Linear way, V3 Class Ballscrew for
Vertical Movement



Enlarged Double "V" Slideway

DOUBLE COLUMN GRINDER



▲ Controller panel

EDG-15300 / EDG-15400 / EDG-15500

EQUIPTOP HIGH PRECISION SURFACE GRINDERS

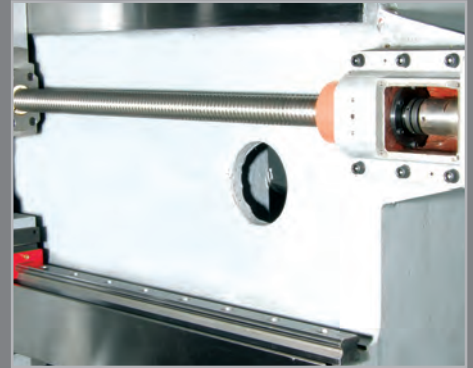
Innovation · Perfection · Technology · Value

Control Panel Discription:

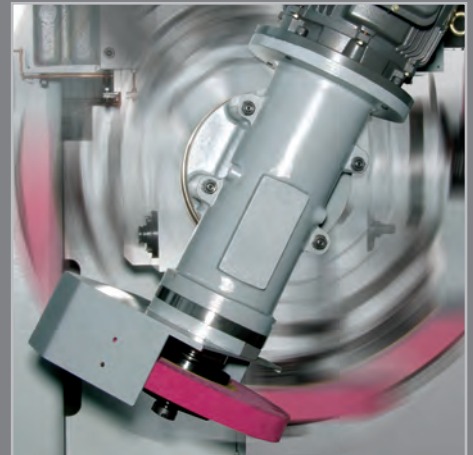
- 1.Horizontal spindle vertical movement mechanical coordinates
- 2.Working digital control setting
- 3.Working mode selector
- 4.Horizontal spindle crossfeed movement display and setting
- 5.Vertical spindle vertical movement display
- 6.Vertical spindle crossfeed movement display



Servo motor with brake & Pneumatic counter weight balance mechanism for vertical axis (15300~15500)

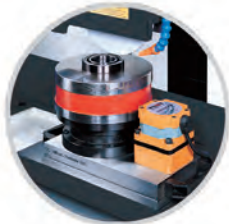


Patented linear and box way structure (15300~15500)



Swivel vertical spindle provides simple operation. Ajustable angle for high efficiency grinding.

OPTIONAL ACCESSORIES



ADJUSTABLE SPEED ROTARY
MAGNETIC CHUCK



PERMANENT MAGNETIC
CHUCK



ELECTRO MAGNETIC
CHUCK



INCLINABLE PERMANENT
MAGNETIC CHUCK



COOLANT SYSTEM WITH MAGNETIC
SEPARATOR



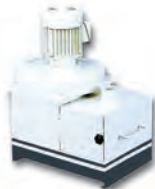
COOLANT SYSTEM



COOLANT AND DUST UNIT



AUTO PAPER FEEDING DEVICE
WITH MAGNETIC SEPARATOR



DUST COLLECTOR



COOLANT SYSTEM WITH MANUAL PAPER FEEDING



FULLY ENCLOSED SPLASH GUARD



MANUAL PARALLEL DRESSING
ATTACHMENT



CHUCK CONTROL WITH
DEMAGNETIZER



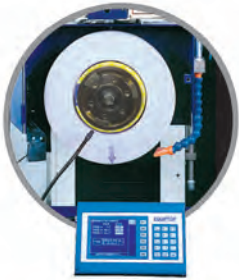
TABLE TYPE SPLASH GUARD



ELECTRIC PARALLEL DRESSING
ATTACHMENT

EQUIPTOP HIGH PRECISION SURFACE GRINDERS

Innovation · Perfection · Technology · Value



DYNAMIC BALANCER



PUNCH FORMER



DIGITAL READOUT



MANUAL PULSE GENERATOR



SPARE WHEEL FLANGE



HALOGEN WORK LIGHT



BALANCING STAND (DOUBLE LINE)



FREQUENCY INVERTOR



ROLLER TYPE BALANCING STAND



MICRO CROSSFEED FOR 618/818 SERIES



CONCAVE/CONVEX FORMING DRESSER



MICRO DOWN-FEED FOR 1020 SERIES ABOVE



MANUAL PULSE GENERATOR FOR ASD II TYPE



PRECISION VICE



HYDRAULIC OIL COOLING SYSTEM

SPECIFICATIONS

MODEL		UF-614 ESG-614	UF-618 / 618M ESG-618 / 618M ESG-1A618 / 2A618	ESG-3A618 ESG-618ASD II	UF-818M ESG-818 / 818M ESG-1A818 / 2A818	ESG-3A818 ESG-818ASD II	ESG-2A1020	
DESCRIPTIONS								
TABLE SIZE		152x360mm	152x460mm		203x460mm		254x508mm	
Max. grinding length	Longitudinal	380mm	480mm				520mm	
Max. grinding width	Crosswise	178mm	178mm		228mm		280mm	
Max. Distance from table surface to spindle centerline		406mm	460mm				Standard column: 500mm Optional high column: 600mm	
standard magnetic chuck size		150x350mm	150x450mm		200x450mm		250x500mm	
Longitudinal movement of table	Max. Travel, hydraulic		480mm				580mm	
	Max. Travel, manual	400mm	510mm				620mm	
	Max. Travel, infinitely variable	-	60HZ, 5-28m/min ; 50HZ, 5-23m/min		60HZ, 5-25m/min ; 50HZ, 5-20m/min			
Cross transverse travel	Auto transverse increment	-	1-10mm				1-13mm	
	Auto constant feeding speed	-			20-320mm/min			
	Max. auto transverse travel	-	180mm		235mm		270mm	
	Max. manual transverse travel	190mm	195mm		250mm		300mm	
	Handwheel per revolution	5mm						
	Handwheel per graduation	0.02mm						
wheelhead vertical infeed	Automatic infeed	-	ASD II : 0.001-0.05mm					
	step feed(Jog)	-	-	0.001mm	-	0.001mm	-	
	Rapid travel, Approx	-	-	250mm/min	-	250mm/min	-	
	Slow travel Approx.	-	-	6mm/min	-	6mm/min	-	
	Handwheel revolution	1mm ★ASD II						
Handwheel graduation	0.005mm ★ASD II							
Grinding spindle drive	Speed	60HZ, 3450R.P.M. ; 50HZ, 2850R.P.M.						
	Power rating	2.0HP					3.0HP	
standard grinding wheel	Diameter	203mm						
	Width	12.7mm, MAX.19mm					19mm, MAX.25mm	
	Bore	31.75mm						
Hydraulic motor	power rating	-	1HPx6P				2.0HPx6P	
Crossfeed motor	power rating	-	40Wx6P				80Wx6P	
Elevating motor	power rating	-	40Wx4P				80Wx6P	
Floor space	Total space required	1600x1133x1610 mm	1810x1133x1660 mm		1810x1285x1680 mm		2400x1450x1750 mm	
Weights	Net weight, Approx.	635KGS	820KGS	850KGS	1170KGS	1205KGS	1780KGS	
	Gross weight Approx.	755KGS	970KGS	1000KGS	1340KGS	1375KGS	2130KGS	
Rated power, Approx		-	3.0HP				5.0HP	
Packing dimensions	L x W x H	1120x1000x1830 mm	1940x1400x1930 mm	1980x1420x1930 mm	1120x1000x1830 mm	1890x1630x1930 mm	2290x1830x2100 mm	

NOTE

- 1.The manufacturer reserves the right to modify the design, specifications, mechanisms, etc., To improve the performances of the machine without notice.
All the specifications show below are just for reference.
- 2.Items marked ● are for 2A,3A,ASD II, TD types only.
- 3.Items marked ■ are for 3A,ASD II, TD types only.
- 4.Items marked ★ are for ASD II, TD types only.
- 5.TD series equipped with PLC control and MAN-MACHINE 7.2" color touch screen.

Please visit our website for detail specifications:

ESG-6120TD / ESG-6150TD / ESG-6200TD
 ESG-8150TD / ESG-8200TD / ESG-8300TD
 Double Column Grinders: ESG-15300 • ESG-15400 • ESG-15500

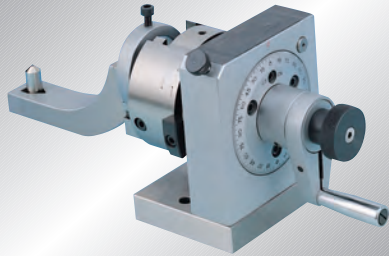
ESG-3A1020 ESG-1020ASD II	ESG-2A1224	ESG-3A1224 ESG-1224ASD II	ESG-3A1228 ESG-1228ASD II	ESG-3A1236 ESG-1236ASD II	ESG-3A1632 ESG-1632ASD II	ESG-3A1640 ESG-1640ASD II	ESG-2040ASD II
254x508mm	300x600mm		305x712mm	305x915mm	406x813mm	406x1020mm	506x1020mm
520mm	600mm		712mm	915mm	813mm	1020mm	1020mm
280mm	300mm		330mm		410mm		500mm
Standard column: 500mm Optional high column: 600mm	585mm		Standard column: 630mm ;			Optional high column: 720mm	
250x500mm	300x600mm		300x700mm	300x900mm	400x800mm	400x1000mm	500x1000mm
580mm	650mm		760mm	960mm	890mm	1060mm	1060mm
620mm	730mm		830mm	1000mm	930mm	1100mm	1100mm
60HZ, 5-25m/min ; 50HZ, 5-20m/min							
1-13mm	1-19mm		1-25mm				
20-320mm/min							
270mm	310mm		350mm			430mm	510mm
300mm	340mm		380mm			460mm	520mm
5mm							
0.02mm							
ASD:0.001-0.01mm / ASD II :0.001-0.05mm							
0.001mm	-		0.001mm				
150mm/min	-		150mm/min				
6mm/min	-		6mm/min				
1mm ★ASD II : Min.display value:0.001mm(no elevating handwheel)							
0.005mm ★ASD II : Min.display value:0.001mm(no elevating handwheel)							
60HZ, 1750R.P.M. ; 50HZ, 1450R.P.M.							
3.0HP	5.0HP		Standard:5HP ; Optional:7 1/2HP				7 1/2HP
203mm	304mm		355mm				
19mm, MAX.25mm	31.75mm		50mm				
31.75mm	76.2mm		127mm				
2.0HPx6P			3.0HPx6P				
80Wx6P	80Wx6P / ASD II :500W						750W
80Wx6P	-	80Wx6P	1/4HPx6P				
2400x1450x1750 mm	2700x1600x1850 mm		2950x1970x2050 mm	3550x1970x2050 mm	3290x2200x2050 mm	4020x2200x2050 mm	4500x2200x2100 mm
1810KGS	1950KGS	1990KGS	3020KGS	3330KGS	3400KGS	4000KGS	4800KGS
2160KGS	2250KGS	2290KGS	3520KGS	3700KGS	4000KGS	4500KGS	5200KGS
5.0HP	7.5HP	8 1/4HP	8 1/2HP(Spindle motor:5HP),11HP(Spindle motor:7.5HP)				12 1/2HP
2480x2060x2100 mm	2340x2130x2100 mm	2480x2140x2100 mm	2500x2290x2220 mm	3000x2290x2220 mm	2800x2290x2220 mm	3250x2290x2220 mm	3500x2290x2220 mm

TD SPECIFICATIONS

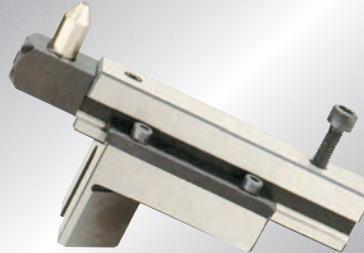
MODEL		ESG-818TD	ESG-1020TD	ESG-1224TD	ESG-1228TD	ESG-1236TD	ESG-1632TD	ESG-1640TD	ESG-2040TD
DESCRIPTIONS									
TABLE SIZE		203x460mm	254x508mm	300x600mm	305x712mm	305x915mm	406x813mm	406x1020mm	506x1020mm
Max. grinding length	Longitudinal	480mm	520mm	600mm	712mm	915mm	813mm	1020mm	1020mm
Max. grinding width	Crosswise	228mm	280mm	300mm	330mm		410mm		500mm
Max. Distance from table surface to spindle centerline		460mm	Standard column: 500mm Optional high column: 600mm	585mm	Standard column: 630mm / Optional high column:720mm				
standard magnetic chuck size		200x450mm	250x500mm	300x600mm	300x700mm	300x900mm	400x800mm	400x1000mm	500x1000mm
Longitudinal movement of table	Max. Travel, hydraulic	480mm	580mm	650mm	760mm	960mm	890mm	1060mm	1060mm
	Max. Travel, manual	510mm	620mm	730mm	830mm	1000mm	930mm	1100mm	1100mm
	Max. Travel, infinitely variable	60HZ, 5-25m/min ; 50HZ, 5-20m/min							
Cross transverse travel	Auto transverse increment	1-10mm	1-13mm	1-19mm	1-25mm				
	Auto constant feeding speed	20-320mm/min							
	Max. auto transverse travel	235mm	270mm	310mm	350mm		430mm	510mm	
	Max. manual transverse travel	250mm	300mm	340mm	380mm		460mm		520mm
	Handwheel per revolution	5mm							
wheelhead vertical infeed	Handwheel per graduation	0.02mm							
	Automatic infeed	0.001-0.05mm							
	step feed(Jog)	0.001mm							
	Rapid travel, Approx	150mm/min							
Grinding spindle drive	Speed	50H / 60HZ, 2850/3450R.P.M.			50HZ / 60HZ, 1450 / 1750R.P.M.				
	Power rating	2.0HP	3.0HP	5.0HP	Standard:5HP ; Optional:7.5HP				7.5HP
standard grinding wheel	Diameter	203mm		305mm	355mm				
	Width	Standard:12.7mm Optional:19mm	Standard:19mm Optional:25mm	31.75mm	50mm				
	Bore	31.75		76.2mm	127mm				
Hydraulic motor	power rating	1.0HPx6P	2.0HPx6P		3.0HPx6P				
Crossfeed motor	power rating	400W			750W				
Elevating motor	power rating	60W	750W		1KW				
Floor space	Total space required	1810x1285x1680 mm	2380x1450x1750 mm	2700x1600x1850 mm	2950x1970x2050 mm	3550x1970x2050 mm	3290x2200x2050 mm	4020x2200x2050 mm	4170x2200x2100 mm
Weights	Net weight, Approx.	1205 KGS	1810 KGS	1990 KGS	3020 KGS	3330 KGS	3400 KGS	4000 KGS	4800 KGS
	Gross weight Approx.	1375 KGS	2160 KGS	2290KGS	3520KGS	3700KGS	4000KGS	4500KGS	5200KGS
Rated power, Approx		3.8HP	7HP	9HP	11HP(Spindle motor:5HP), 13.5HP(Spindle motor:7.5HP)				13.5HP
Packing dimensions	L X W X H	1880x1830x1960 mm	2450x2180x2110 mm	2450x2180x2110 mm	2670x2290x2240 mm	2930x2290x2240 mm	2930x2290x2240 mm	3120x2290x2240 mm	3500x2290x2460 mm

PRECISION ACCESSORIES

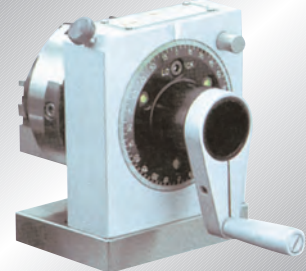
• Bi-directional punch former



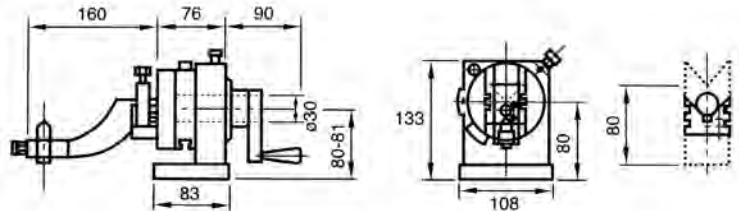
• Stant dresser (OPT)



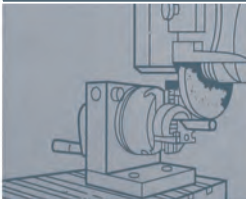
• Single direction punch former



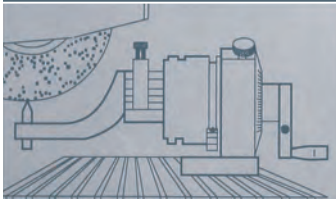
PUNCH FORMER is to grind the point of standard punches, for precise and fast operation. Including the round, radius and multi-angular punches, any special form can be ground precisely. Using the attachments, the concave & convex radius angular dressing of grinding wheel can be performed. In addition to panel grinding to punch former can be used for inspection, light milling, jig boring, indexing, radius dressing and machining EDM electrodes. The max. dia. of punch grinding up to 1-1/8".



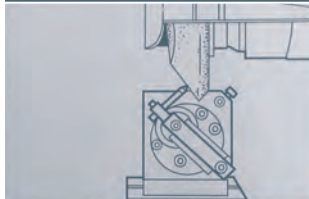
Punch forming



Grinding wheel radius dressing



Grinding wheel angular dressing



Main Parameters:

Center height	80 mm
Clamping diameter in V-slot	Ø4-Ø30 mm
Travel of V-block	25 mm
Transversal travel of slider	±12.5mm
Quantity of tooth and accuracy of disk	24-15°±5"
Max wheel diameter	Ø200 mm
Max radius when dressing arc	
Convex	R48mm
Concave	R100mm

Grinding wheel dressing application



Punch forming application





ISO-9001



IT'S VERY WELL
MADE IN TAIWAN

National patents

- Longitudinal straight movement mechanism of surface grinder.
- Timing belt straight drive system.
- Dual motors, positioning and feeding mechanism.
- Timing belt straight drive system for the table of surface grinder.
- Roughing and micro table speed control mechanism.
- Surface grinding table reverse construction.
- Belt drive mechanism for surface grinding table.
- Multiple formed grinder.
- Dust collector.

- Coolant and dust unit.
- NC & CNC multiple formed molds.
- Heats reduce system for motor fan construction.
- Synchronized machining works system.
- Dust collector turbine blade construction for surface grinder.
- The constructions improvement of dust & coolant system for surface grinder.

German patents :

- Safety handwheel system.



"EQUIPTOP" means "TOP EQUIPMENT" A Wise Choice-Equiptop.



EQUIPTOP HITECH CORP.

■ TEL : +886-4-25576060

■ FAX : +886-4-25569677.25575866

**NO. 500, SAN FENG RD., HOULI DISTRICT,
TAICHUNG CITY, TAIWAN 42156**

■ e-mail: equiptop@hibox.hinet.net

■ <http://www.equiptop.com.tw>